

# **PRIMARY CHORD CHART**

## **NOTATION**

The Quinn & Quinn Co. 2005

### C MAJOR PRIMARY CHORDS

Musical notation showing four chords in the C major key: C major, F major, G major, and G7. Each chord is represented by a vertical line with notes on a single staff.

C F G G7

fig.29

### C MAJOR CHORD PROGRESSION

Musical notation showing a chord progression in the C major key: C major, F major, G major, and G7. The progression is shown in a grand staff with notes on both the treble and bass staves.

C F G G7

fig.30

### G MAJOR PRIMARY CHORDS

Musical notation showing four chords in the G major key: G major, C major, D major, and D7. Each chord is represented by a vertical line with notes on a single staff.

G C D D7

fig.31

### G MAJOR CHORD PROGRESSION

Musical notation showing a chord progression in the G major key: G major, C major, D major, and D7. The progression is shown in a grand staff with notes on both the treble and bass staves.

G C D D7

fig.32

### D MAJOR PRIMARY CHORDS

Musical notation showing four chords in the D major key: D, G, A, and A7. The chords are written in a single staff with a treble clef and a key signature of two sharps (F# and C#). The D chord is on the first line (D4), G is on the second line (G4), A is on the second space (A4), and A7 is on the second space (A4).

fig.33

### D MAJOR CHORD PROGRESSION

Musical notation showing a chord progression in the D major key: D, G, A, and A7. The progression is written in two staves (treble and bass clefs) with a key signature of two sharps. The D chord is on the first line (D4), G is on the second line (G4), A is on the second space (A4), and A7 is on the second space (A4).

fig.34

### A MAJOR PRIMARY CHORDS

Musical notation showing four chords in the A major key: A, D, E, and E7. The chords are written in a single staff with a treble clef and a key signature of three sharps (F#, C#, G#). The A chord is on the first space (A4), D is on the second line (D4), E is on the second space (E4), and E7 is on the second space (E4).

fig.35

### A MAJOR CHORD PROGRESSION

Musical notation showing a chord progression in the A major key: A, D, E, and E7. The progression is written in two staves (treble and bass clefs) with a key signature of three sharps. The A chord is on the first space (A4), D is on the second line (D4), E is on the second space (E4), and E7 is on the second space (E4).

fig.36

**E MAJOR PRIMARY CHORDS**

A musical staff in treble clef with a key signature of one sharp (F#). It shows four chords: E major (E, G#, B), A major (A, C#, E), B major (B, D#, F#), and B7 (B, D#, F#, A). Each chord is represented by a vertical line with a circle containing the chord's notes.

E A B B7

fig.37

**E MAJOR CHORD PROGRESSION**

A two-staff musical notation in treble and bass clefs with a key signature of one sharp (F#). It shows a progression of four chords: E major, A major, B major, and B7. The notes are written as whole notes.

E A B B7

fig.38

**B<sup>1</sup> MAJOR PRIMARY CHORDS**

A musical staff in treble clef with a key signature of two sharps (F#, C#). It shows four chords: B major (B, D#, F#), E major (E, G#, B), F# major (F#, A, C#), and F#7 (F#, A, C#, E). Each chord is represented by a vertical line with a circle containing the chord's notes.

B E F# F#7

fig.39

**B MAJOR CHORD PROGRESSION**

A two-staff musical notation in treble and bass clefs with a key signature of two sharps (F#, C#). It shows a progression of four chords: B major, E major, F# major, and F#7. The notes are written as whole notes.

B E F# F#7

fig.40

**F#<sup>2</sup> MAJOR PRIMARY CHORDS**



fig.41

**F#                    B                    C#                    C#7**

**F# MAJOR CHORD PROGRESSION**



fig.42

**F#                    B                    C#                    C#7**

**C#<sup>3</sup> MAJOR PRIMARY CHORDS**



**C#                    F#                    G#                    G#7**

fig.43

**C# MAJOR CHORD PROGRESSION**



fig.44

**C#                    F#                    G#                    G#7**

### F MAJOR PRIMARY CHORDS



fig.45

F Bb C C7

### F MAJOR CHORD PROGRESSION



F Bb C C7

fig.46

### Bb MAJOR PRIMARY CHORDS



Bb Eb F F7

fig.47

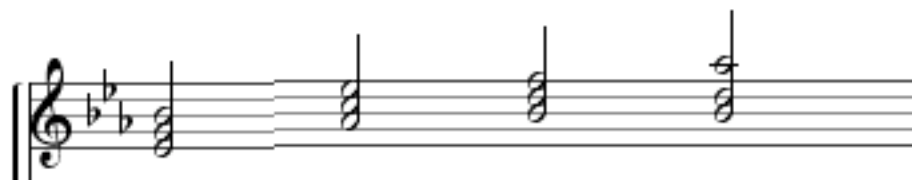
### Bb MAJOR CHORD PROGRESSION



Bb Eb F F7

fig.48

### **E<sub>b</sub> MAJOR PRIMARY CHORDS**



**E<sub>b</sub>      A<sub>b</sub>      B<sub>b</sub>      B<sub>b</sub>7**

**fig.49**

### **E<sub>b</sub> MAJOR CHORD PROGRESSION**



**E<sub>b</sub>      A<sub>b</sub>      B<sub>b</sub>      B<sub>b</sub>7**

**fig.50**

### **A<sub>b</sub> MAJOR PRIMARY CHORDS**



**A<sub>b</sub>      D<sub>b</sub>      E<sub>b</sub>      E<sub>b</sub>7**

**fig.51**

### **A<sub>b</sub> MAJOR CHORD PROGRESSION**



**A<sub>b</sub>      D<sub>b</sub>      E<sub>b</sub>      E<sub>b</sub>7**

**fig.52**

### Db<sup>4</sup> MAJOR PRIMARY CHORDS



Db                  Gb                  Ab                  Ab7

fig.53

### Db MAJOR CHORD PROGRESSION



Db                  Gb                  Ab                  Ab7

fig.54

### Gb<sup>5</sup> MAJOR PRIMARY CHORDS



Gb                  Cb                  Db                  Db7

fig.55

### Gb MAJOR CHORD PROGRESSION



Gb                  Cb                  Db                  Db7

fig.56

### **Cb<sup>6</sup> MAJOR PRIMARY CHORDS**



fig.57

**Cb                  Fb                  Gb                  Gb7**

### **Cb MAJOR CHORD PROGRESSION**



fig.58

**Cb                  Fb                  Gb                  Gb7**

<sup>6</sup> Remember Enharmonic with B Major